

## ***"The New Era of LabVIEW: NI's Commitment to Excellence and Efficiency"***

*As we embark on a new year, NI reaffirms its commitment to innovation while nurturing its roots. With Emerson's recent investment in NI, LabVIEW's vital role in test and measurement is more important than ever. LabVIEW's legacy is undisputed, but our vision extends beyond past achievements, as we focus on a future where LabVIEW's will differentiate its users in a challenging test engineering world.*

*In this edition of The Edge, we'll share our strategic vision for LabVIEW, detailing the investment in core functionality, development efficiency, and collaborative technologies that ensure its centrality in the evolving landscape of test and measurement.*

*In addition, learn about how the Indy Autonomous Challenge enables university students to explore and expand the boundaries of self-driving technologies. In this high-stakes, high-speed arena, NI plays a crucial role by providing essential equipment and expertise, fostering an environment of rapid innovation and practical application.*

---

### ***NI's Strategic Vision for LabVIEW***

*As a new year unfolds, a lot of resolutions and declarations get thrown around. While we're certainly all for innovation, we also know it's important to recognize and nourish our core. With that in mind, NI and LabVIEW are on the cusp of an exciting year.*

*Emerson's investment in NI underscores the critical role of LabVIEW in test and measurement. We have deep confidence in its future. LabVIEW isn't just a tool; it's a cornerstone of NI's strategy. From consumer electronics like phones to automobiles, spacecraft, renewable energy solutions, and even critical healthcare devices like pacemakers, LabVIEW's influence is ubiquitous in our daily lives.*

*But we're focused on the future of LabVIEW, not the past.*

*In a world where industries face faster market entries, complex product demands, and the need for efficient resource management, LabVIEW's productivity benefits make it stand out as a key asset for test engineers.*

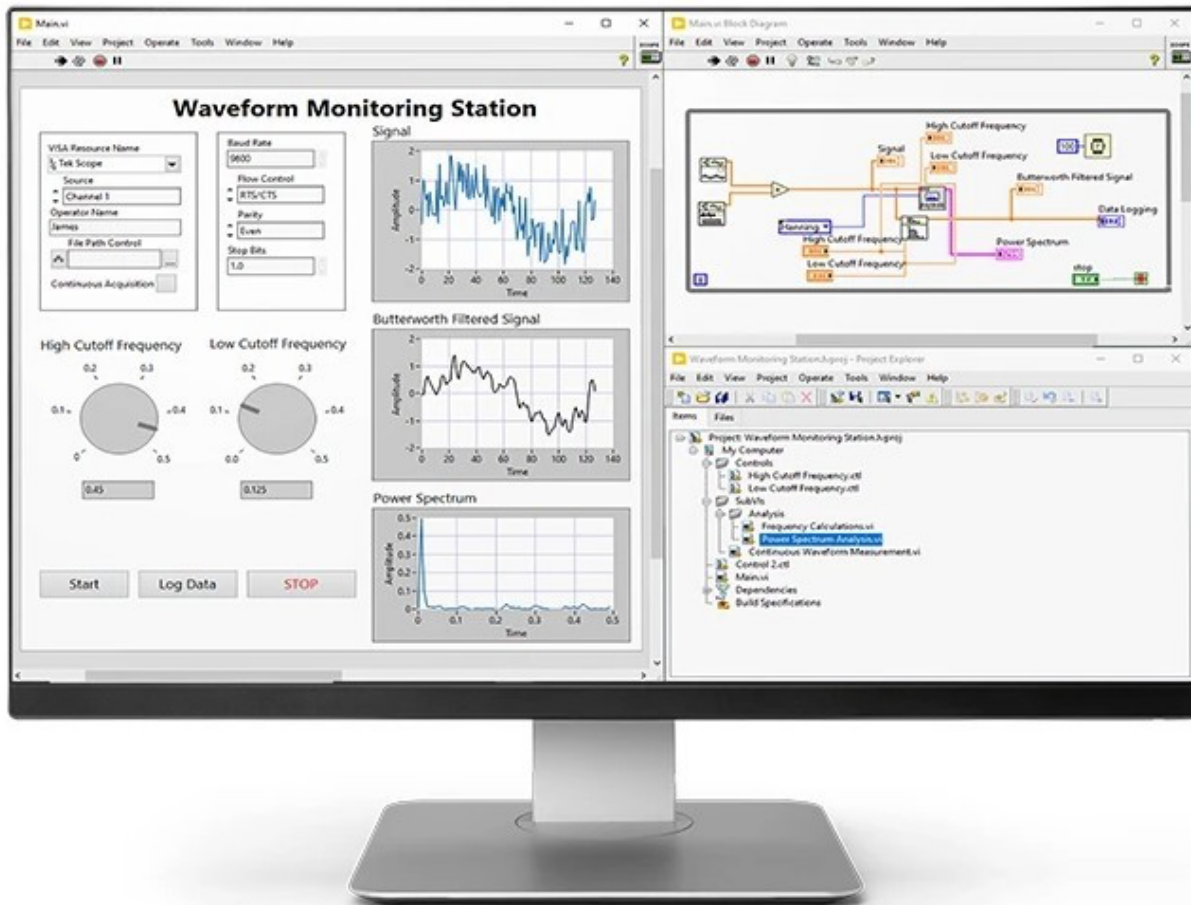
*To ensure LabVIEW users will always have confidence in their choice of tool, we are committed to investments in these three areas:*

- 1. LabVIEW must always meet your application needs. We know your job gets harder every year as your product evolves in new directions. We will never stop investing in core functionality to meet application needs such as instrument drivers, analysis IP, sequencing, ecosystem integration, and more.*

2. *LabVIEW must always make you quicker. We know getting your product to market on time relies on engineers like you meeting deadlines. That's why so many choose LabVIEW to make them significantly more efficient. We're committed to investment that speeds up your development. That means no-code options, streamlined hardware interaction, generative AI supported activities, automated analysis, and more.*
3. *LabVIEW must help you collaborate with others. We know you don't work alone, so we're investing in technology to make collaboration easier. Sharing ideas and IP with your colleagues and community peers benefits everyone. NI will support this with remote interfaces, connected development tools, 3rd party software compatibility, community programs, and more.*

*LabVIEW is core technology for NI and will remain central to the success of our users for decades to come. To realize this vision we must first recognize that true efficiency lies not in fulfilling a single task, but in delivering success across the wider test development workflow – from planning to building, deploying, and managing applications.*

*We're investing to better connect our software, allowing LabVIEW users to optimize each task with the right tool for the job. By connecting LabVIEW to configuration, visualization, and 3rd party tools, you can streamline the entire workflow from planning to application management. This approach includes investing in tool interoperability and new, more accessible licensing models.*



2024 will be a great year for LabVIEW. We're committed to improving LabVIEW, connecting LabVIEW, and nurturing the LabVIEW community. [We are committed to LabVIEW.](#)"

The above is a copy of the content from the Edge Newsletter [published on LinkedIn on January 23, 2024.](#)